

2 February

World Wetlands Day

Upstream-Downstream.
Wetlands Connect Us All



www.environment.gov.au/water/environmental/wetlands



Australian Government

Department of the Environment, Water, Heritage and the Arts



What is a wetland?

& World Wetlands Day 2 February (annually), a United Nations International Day

By Jeanie Clark,
Wimmera CMA River Detectives Facilitator
(CC) enviroed4all®, Jeanie Clark, Warracknabeal 2022.



enviroed4all®
environmental education for everyone

Aims of this R.D.'s 'Wetlands' PD.

The basic aims of this PD are to raise awareness of :

- what a wetland is
- the many different types of wetlands, especially those within personal experience
- the annual World Wetlands Day (2 February)

This powerpoint provides information on:

- A way to introduce the **concept** of wetlands
- A way to draw on and then share what has been passively **observed**, e.g. over a wet January
 - Thinking about the plants and creatures living in these water places
 - how they use these water places
 - what action might be needed to look after them
- The Australian government **definition** of '**wetlands**'
- World Wetlands Day 2022, its **theme** « Action for people and nature »
- and how that might be applied in wetlands of their experience.



The activities in this PD may be useful for teachers to also use with classes as a preliminary to participation in River Detectives 2022 , e.g. in discussions of

- *site selection,*
- *rationale for monitoring*
- *and actions that may later be felt to be worth doing at such a site.*

What is a wetland? WWD2022 p2.
Photo © J. Clark Warracknabeal 2022



'What is a wetland?' Concept activity

Draw or write about a personal experience of a wetland over this January - There's been a lot of rain over January!- including:

- the type of environment in which it was located
- the plants and creatures living in this water place
- the uses the plants and creatures made of it
- any action humans should take to look after this water place



Yarriambiack Creek as a wetland,
© J.Clark, 2005, enviroed4all®

What is a wetland? WWD2022 p3.



Definitions of a wetland

A wetland is an area of land where water covers the soil - even for only part of the year. They can be natural or artificial. The water in them can be still or flowing, fresh, salty or in-between (brackish). Wetlands are found in all kinds of places - along the coast, in the mountains, in dry inland areas, even underground. Many of them are connected by rivers. Some of the most common types of wetlands from different parts of Australia are described below.

Source: Aust Govt 2018, Dof SEWP&C « Wetlands and World Wetlands Day » at www.environment.gov.au/wetlands

Broad types of wetlands by origin:

- Linked to the sea - Marine and coastal zone
- Linked to streams and lakes in inland regions
- Human-made wetlands - in urban or natural environments

Broad types of wetlands by environment:

- Arid wetlands of saltlakes, springs and temporary streams, lakes and waterholes
- Alpine wetlands on **mountain** tops of narrow creeks and bogs, lakes and pondages, and waterfalls
- **Inland** rivers and their floodplains, billabongs, swamps, marshes and lakes... ponds, and waterfalls
- Marine and **coastal** wetlands linked to the seas with beaches, lagoons, and reefs, and estuaries.
- **Estuaries** (tidal river mouths) with mudflats, mangrove forests and salmarshes

For a detailed list of the wetlands see: [Directory of Important Wetlands in Australia – DAWE](#) or <https://www.awe.gov.au/water/wetlands/australian-wetlands-database/directory-important-wetlands>

What is a wetland? WWD2022 p4.
photo © J. Clark_Warracknabeal2021



World Wetlands Day 2022



Source: UN2022, WWD at [Home – WorldWetlandsDay](#) or <https://www.worldwetlandsday.org/>

The evolution of this picture is shown as a 15 second **video** on Youtube at

[Les zones Humides: Valoriser - Gérer - Restaurer - Aimer – YouTube](#) or https://www.youtube.com/watch?v=K-3a_gYKi1s

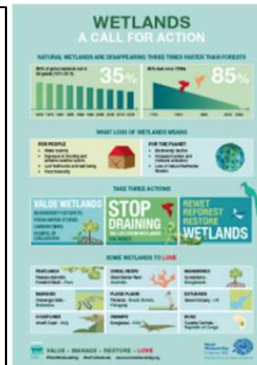
It has no spoken words so an activity would be to observe and then create the commentary to go with it.

The writing is in French – but the translation of all the writing is above.

Some 'wetlands' activities from the web

Oral/aural literacy – share your wetland experiences and ideas with others, or discuss the WWD 2022 infographic (to the right) at

https://www.worldwetlandsday.org/documents/906051/917531/WWD22_Infographic_english.jpg/cdb195e6-3538-4d6c-901d-c60296ae49b1?t=1638256791807



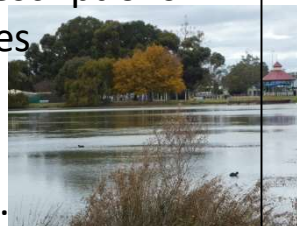
Activities with an **art/ maths (symmetry)** theme – i.e. origami - Choice of three animals ready to print: frog, turtle and pelican at

[Discovering wetlands in Australia – DAWE](#)

Have a go first- can be tricky!



Sort groups of photos, drawings, descriptions into the types of wetlands e.g. right, lake –inland.



Discuss which elements of the WWD2002 picture (above) are in local wetlands, while **colouring it**. Line master is at [Materials – WorldWetlandsDay](#) or <https://www.worldwetlandsday.org/material#> or direct from https://www.worldwetlandsday.org/documents/906051/917531/WWD2022_Color_in_English.jpg/84d3ed5b-71c0-19cb-80ae-c82e34855c65?t=1638256691135

If you have enough time, have a look through the the ' teaching unit' with its six topics (below) for your interests. It's the first resource at

<https://www.awe.gov.au/water/wetlands/publications/discovering-wetlands-australia> which is « *Discovering Wetlands in Australia- A primary classroom resource* »:

- 1 what is a wetland?
- 2 Water and wetlands
- 3 Types of wetlands
- 4 Wetlands and forests
- 5 Indigenous values and perspectives of wetlands
- 6 What is a Ramsar site?

What is a wetland? WWD2022 p6.
photo © J. Clark Warracknabeal 2022



Wetland PD evaluation



What is a 'wetland'? and World Wetlands Day, 2 February
T1 2022 RD online PD - date completed:

The topic of this online PD comes from a discussion today with a school about it's potential as an introduction to exploring water places, through River Detectives, especially following this 'wet' January. It has thus been created in one day and, if you use it – at any time in the future- your feedback would be most appreciated as this is an annual day and it might become a useful introduction every year.

Please take time to fill in this survey and return it to me. Your PD attendance certificate will then be sent to you. Your comments are confidential but are important to RD's/CMA for planning future events.

- Before this training, what was your level of knowledge of the topic?
None Some Reasonable Good Excellent
- How much has this training improved your knowledge of this topic?
Not at all Slightly Moderately Reasonably Considerably
- Please note any additional aspects to this topic that you would have liked included.
- After this training, how likely are you to include parts of this topic in your classroom activities?
Not at all Unlikely Uncertain Likely Definitely
- Please briefly outline what you might do:
- Please describe what limiting factors may prevent you from including these activities in your classroom?

7. Please assess how suitable this training was for you. If you did not use any part, please indicate this, by putting a line through it.

VL = Very Low L = Low M = Medium H = High VH = Very High

Part of the training	Quality of information					length				
	VL	L	M	H	VH	VL	L	M	H	VH
What is a Wetland? (ppt p3-4)	VL	L	M	H	VH	VL	L	M	H	VH
World Wetlands Day (ppt p5)	VL	L	M	H	VH	VL	L	M	H	VH
Linked classroom activities (ppt p6)	VL	L	M	H	VH	VL	L	M	H	VH

- How could we improve training, like this?
- What other topics or events (up to three) would you be most interested in your local RD - CMA delivering for RD teachers and schools?

Jeanie Clark, Wimmera CMA River Detectives Facilitator February 2022

River Detectives, T1 2022.
On-line and in-your-time
Professional Development

What is a wetland? World Wetlands Day, 2 Feb

A **DOCX** copy of this form has been attached to the email for you to use if you decide to do this PD. Whenever you choose to do this PD, please **complete** the evaluation form and **email** it back to me (or email me for a new one if needed).

Your **feedback** on this **PD** is essential.

A **PD certificate** will be sent to you on my receipt of your evaluation form.

Thank you
Jeanie Clark



enviroed4all®
environmental education for everyone

enviroed4all@skymesh.com.au
Ph 53941178 mob 0428460492

