

# River Detectives Program

## 2021 School Plan



Name of School / Group;

Use these prompts as a conversation starter for you and your team to consider how the program will look in your setting . . . .

<p><b>WHY?</b></p> <p>What are your objectives in being involved?</p> <p>What do you hope your students will learn/grow to understand?</p>	
<p><b>WHERE?</b></p> <p>Where will you test water quality? (waterway, location)</p> <p>Will you test on site with students or staff collect water to test back at school?</p> <p>How will students travel to the site?</p>	
<p><b>WHO?</b></p> <p>What year levels / classes will be involved?</p> <p>What staff will be involved ?</p> <p>Can you involve the community? Parents? Landcare? Traditional Owners? Friends Of groups?</p>	
<p><b>WHEN / HOW OFTEN?</b></p> <p>Will you test monthly all year? Each week for a term? After significant weather events?</p>	
<p><b>WHAT?</b></p> <p>Will you also monitor water bugs? When / who will request the equipment?</p> <p>Will you do a habitat survey?</p> <p>Would you like to get involved in some on-ground work (revegetation, plant propagation, weed control, habitat creation)?</p>	

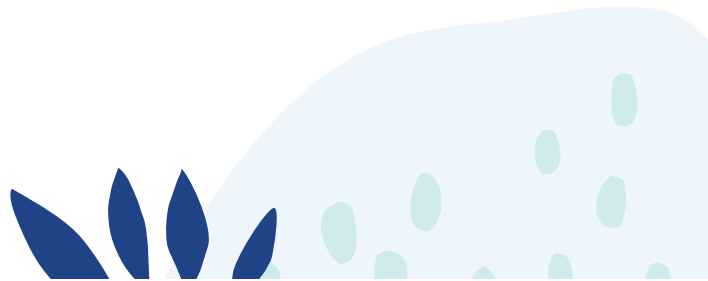
<p><b>DATA</b></p> <p>How will you enter your data into the portal?</p>	<ul style="list-style-type: none"> <li><input type="checkbox"/> On a laptop/desktop computer</li> <li><input type="checkbox"/> On an ipad/tablet</li> <li><input type="checkbox"/> With students at the time of testing (direct input)</li> <li><input type="checkbox"/> With students in the classroom following testing (from data sheet)</li> <li><input type="checkbox"/> Myself, outside of class time</li> <li><input type="checkbox"/> Students to take responsibility for this</li> <li><input type="checkbox"/> Other:</li> </ul>
<p><b>COMMUNICATION</b></p> <p>How will you communicate your results to others in the school community about your program? Will you communicate to the broader community?</p>	<ul style="list-style-type: none"> <li><input type="checkbox"/> In the school newsletter</li> <li><input type="checkbox"/> On a school blog or website</li> <li><input type="checkbox"/> Presentation to school at assembly</li> <li><input type="checkbox"/> Share on Billabong Banter (River Detectives website)</li> <li><input type="checkbox"/> Article in a local newsletter/paper</li> <li><input type="checkbox"/> Local media</li> <li><input type="checkbox"/> Kids teaching kids</li> <li><input type="checkbox"/> Kids teaching parents</li> <li><input type="checkbox"/> Other:</li> </ul>
<p>Anything else we need to consider:</p>	

**Please acknowledge the following:**

- The contents of the kit will be my responsibility to look after and return to my coordinator when required.
- The kit will be stored in a locked cupboard.
- All equipment will be kept in good condition and meters will be calibrated to keep accurate results.
- Site and site safety considerations will be undertaken in accordance with school policy.
  - You will need to comply with school requirements when collecting samples or taking groups to the site. All schools must have their own insurance policy to cover any injury/ loss or damage for students participating in River Detectives activities.
  - Keep in mind rainfall and other natural events can influence water quality and it is important to be aware of what is happening in your area that may influence your results and ability to access the site.
- You will enter water quality data collected from at least one site in the data portal monthly (or as many times as you can)
- In case of a pollution incident at your site please contact your coordinator ASAP.
- River Detectives is about learning and communication. Share your news and learnings on Billabong Banter (on the RD website) and with your broader community. Creativity is encouraged!
- Participation in professional development workshops is critical to understand equipment safety & use, and to improve knowledge and interpretation of data.
- Should your school no longer want to participate in the program, you will contact your coordinator and arrange for kit return.

*Thank you for being a part of the River Detective program. Should you have any questions please contact your local River Detectives coordinator.*

Name	Signature	Date










The kit and contents are on loan to your school for the year.

Please contact your River Detectives coordinator as soon as possible if any equipment is lost, damaged, not functioning or if the contact person/s stops overseeing the program and the kit.

If you need any refills, batteries etc. your River Detectives coordinator should be able to assist.

**Kit Checklist:**

Item	Picture (not to scale)	Have it	Use by date
Water collection pole and bottle			
Spirit thermometer			
Lacqua Twin EC Meter			
Bottle of EC calibration solution (please check use by date)			
pH strips (may be loose in a zip lock bag)			
Turbidity tube (may be in two parts)			
Visicolor Phosphate Test kit ** check use by dates on both chemicals **			
Field Manual			
Safety glasses			
Disposable gloves			
Beaker			
Waste bottle			

**My Regional Coordinator is;**

**Contact details;**



## OUR SITE (enter site code, name & school)

The habitat quality of our site was \_\_\_\_\_.

Comment on key features you found?

*Note: Degraded 8-11, Poor 12-19, Fair 20-28, Good 29-35, Excellent 36-40*

This year we visited our site

(X)

times!

Enter a photo of your site and/or you visiting the site!

### pH

Our average was \_\_\_\_\_

Our highest result was \_\_\_\_\_

Our lowest result was \_\_\_\_\_

### Electrical conductivity

Our average was \_\_\_\_\_

Our highest result was \_\_\_\_\_

Our lowest result was \_\_\_\_\_

### Reactive phosphorus

Our average was \_\_\_\_\_

Our highest result was \_\_\_\_\_

Our lowest result was \_\_\_\_\_

### Turbidity

#### Graph?

Our average was \_\_\_\_\_

Our highest result was \_\_\_\_\_

Our lowest result was \_\_\_\_\_

*Can you draw a graph of one of your results over the year?*

*Our overall waterbug rating was \_\_\_\_\_.*

*The most sensitive water bug we found was a \_\_\_\_\_.*

*The most tolerant waterbug we found was a \_\_\_\_\_.*

*The most abundant waterbug we found was a \_\_\_\_\_.*

*Something interesting you found out about waterbugs in your waterway.*

*OUR SITE (summary of what you found – often litter, much rain for the year? Changed? Of overall good/poor quality...). What was something interesting you found or did while visiting or learning about the site?*