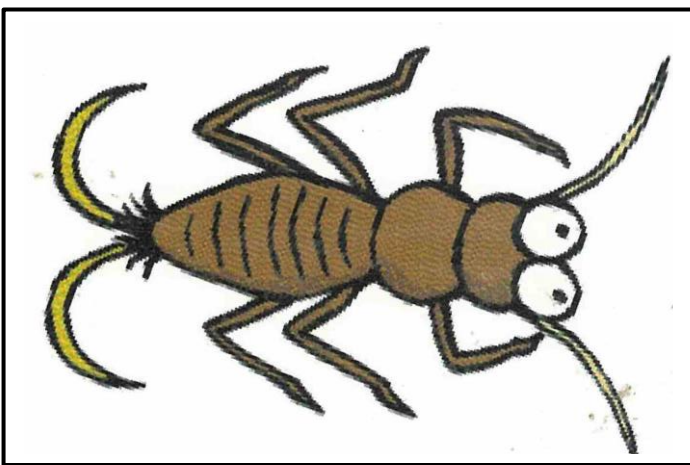


Print and assemble cards with picture and information back to back (laminated will increase their longevity) and use with the In Stream Habitat Poster placing bugs in their preferred habitat zone when introducing waterbugs to students, or

- print the pictures and information separately and match to each other.
- play celebrity head to 'guess the bug'
- sort the bugs into groups; herbivores/carnivores, legs/no legs, habitat zones, sensitive/tolerant. How else could you classify them ?
- print two sets (pictures only) and use for games of Concentration, Snap or Fish

Very Sensitive Bugs

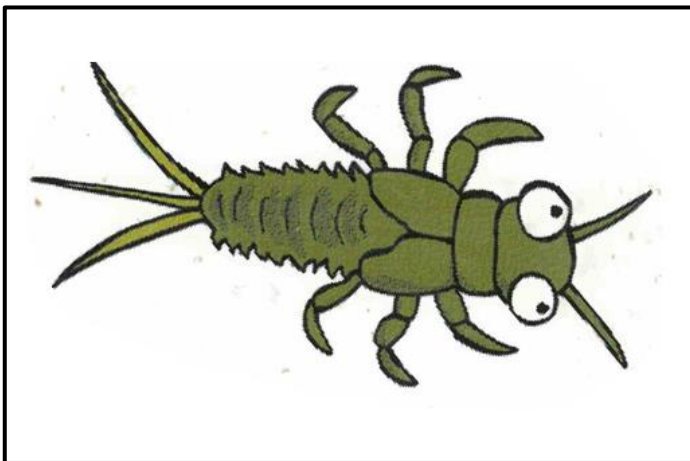


I am a **STONEFLY NYMPH**

I live in the **Substrate Zone** on stones in the fast flowing sections of creeks or amongst reeds in slow moving water. I am **very sensitive** to poor water quality.

I am a **herbivore** and eat decaying plant material.

I can delay my development in drought conditions to wait for rain.

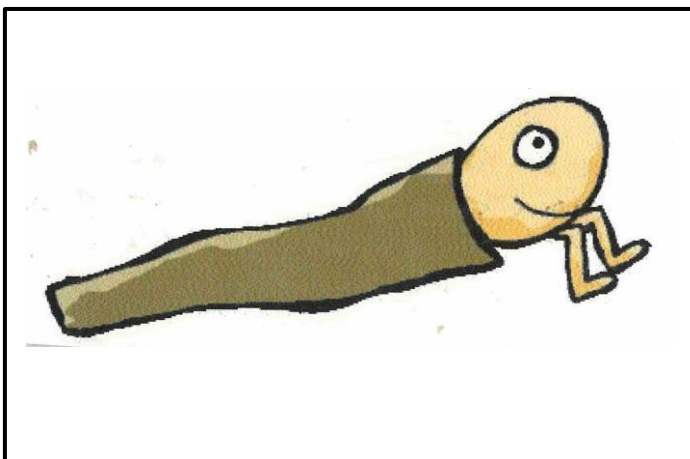


I am a **MAYFLY NYMPH**

I live in the **Substrate Zone** and I am **very sensitive** to poor water quality.

I am a **herbivore** and I like to graze on dead plants and leaves.

I have gills on the sides of my abdomen that I flutter and I may only live for a few days or hours.



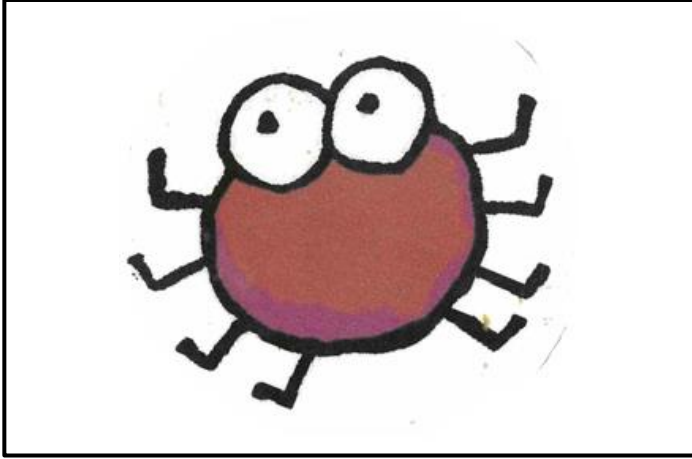
I am a **CADDISFLY LARVAE**

I am found in the **Reed Zone** and **Substrate Zone** amongst rocks, branches and plants. I am **very sensitive** to poor water quality.

I am an **omnivore**, scraping algae from rocks and hunting for small invertebrates

I build myself a protective case out of leaves, sand, reeds or sticks and drag it around.

Sensitive Bugs



I am a **WATERMITE**

I am usually found in the **Reed Zone** amongst plants in sheltered waterways. I am **sensitive** to poor water quality.

I am a **carnivore** and feed on small animals by sucking their juices.

You might be able to see the blood I've sucked by my red colour.

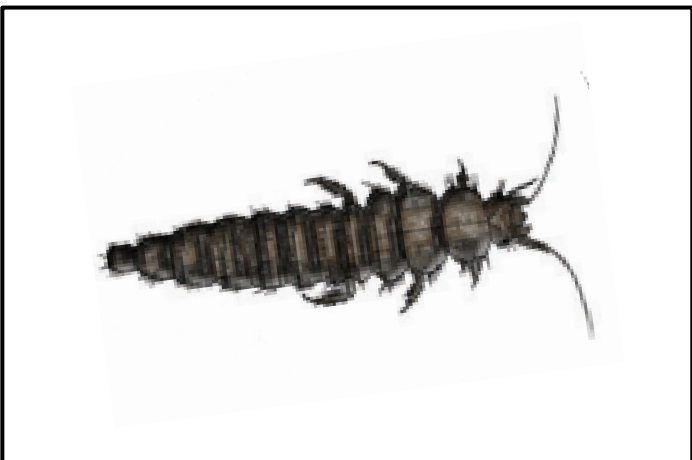


I am a **BLACK FLY LARVAE**

I cling onto logs, rocks and aquatic plants. I am **sensitive** to poor water quality.

I am a **carnivore** and my body shape makes me look like a 'chicken drumstick'.

To move around I vomit up gluey silk then I use the hooks on my bottom to cling onto the silk. I repeat the process to move forward.



I am a **MARSH BEETLE LARVAE**

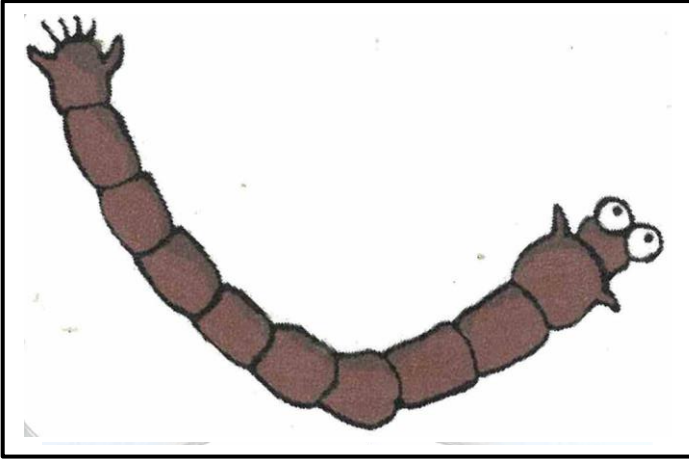
I am found in the **Littoral Zone** in flowing water.

I am **sensitive** to poor water quality.

I am a **detrivore**.

I eat by filtering food from the surface of leaves and stones using complex comb-like mouthparts.

Tolerant Bugs

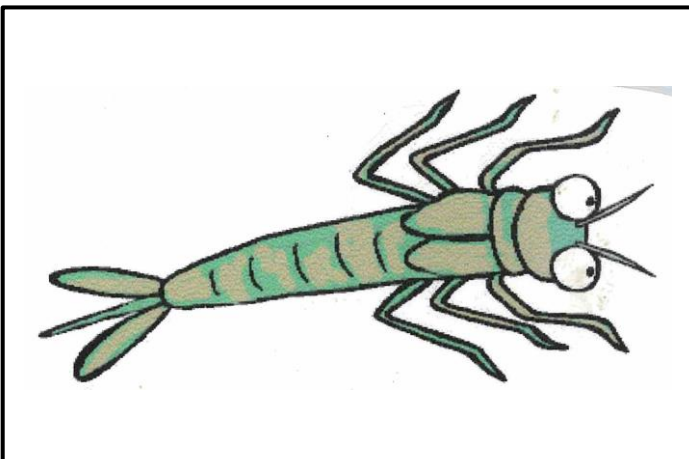


I am a **BLOOD WORM**

I live in the **Benthic Zone** and am **tolerant** to poor water quality.

I am an **omnivore** and eat decaying plant and animal matter.

I am often found in places with little oxygen available, such as among rotting leaves.

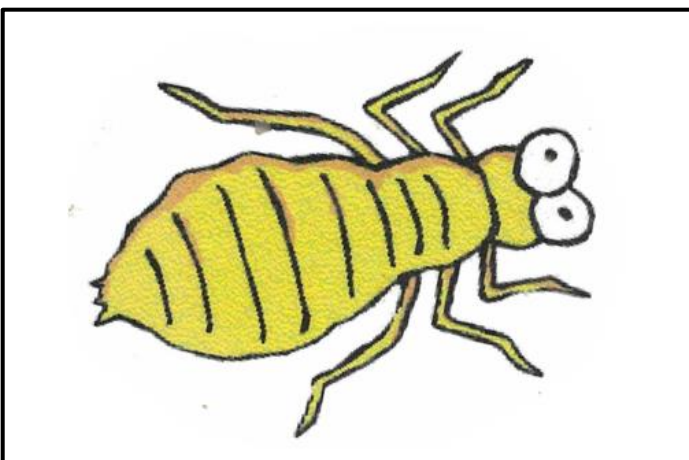


I am a **DAMSEFLY NYMPH**

I live in the **Reed Zone**, clinging to reeds or snags. I am **tolerant** to poor water quality.

I am a **carnivore** emerging from eggs that were inserted into water plants.

The three tail feathers at the end of my body are actually gills that help me to breathe.

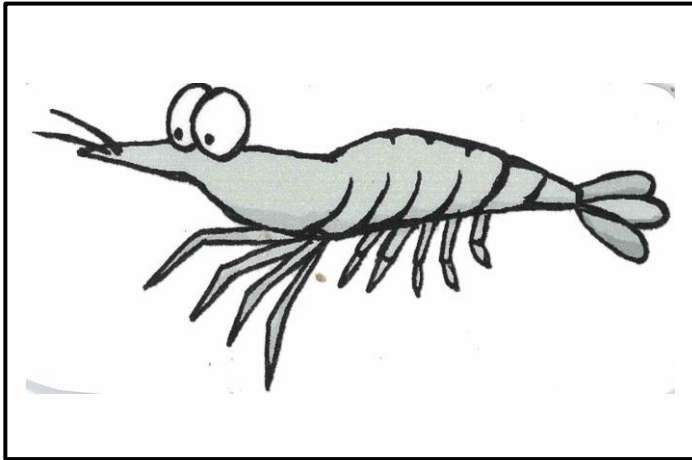


I am a **DRAGONFLY NYMPH**

I live in the **Reed Zone**, clinging to emergent plants. I am **tolerant** to poor water quality.

I am a **carnivore** and catch small creatures with my extending mouthparts.

I have gills on the inside of my body so I pump water in and out of my bottom to breathe.

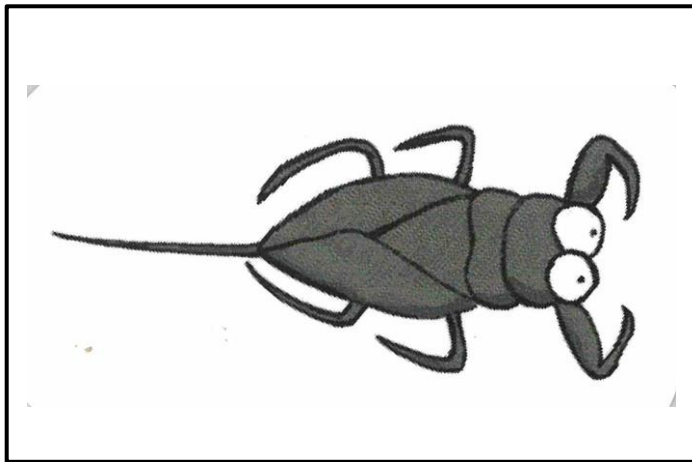


I am a FRESHWATER SHRIMP

I live in the **Benthic Zone**, often close to the bank on rocks or among aquatic plants. I am **tolerant** to poor water quality.

I am a **detrivore** eating rotting plant matter.

I eat by using the first two pairs of legs to grab food and put it in my mouth.

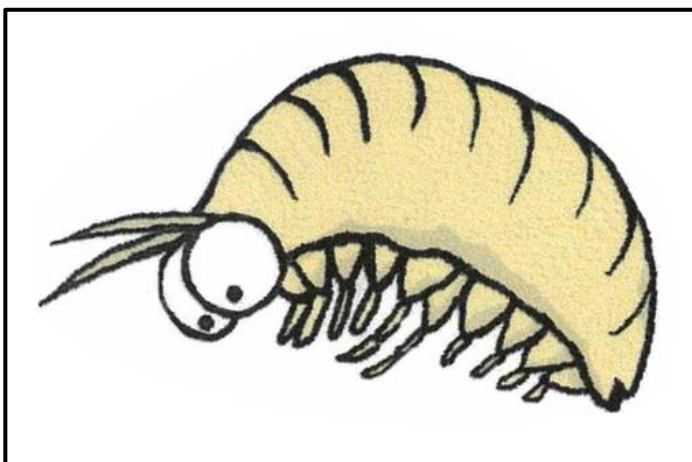


I am a LEAFY WATER SCORPION

I live in the **Reed Zone** and am **tolerant** to poor water quality.

I am a **carnivore**.

I have a breathing tube which I use like a snorkel and I have excellent eyesight.

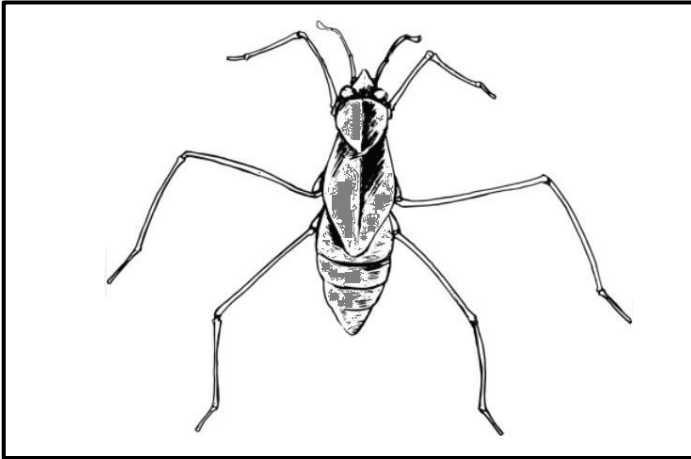


I am an AMPHIPOD (SCUD or SIDE SWIMMER)

I live in the **Reed Zone** in still or slow flowing water and am **tolerant** to poor water quality.

I am an **omnivore** and I eat most things that fit in my mouth !

The male will guard the female until she disperses her young.

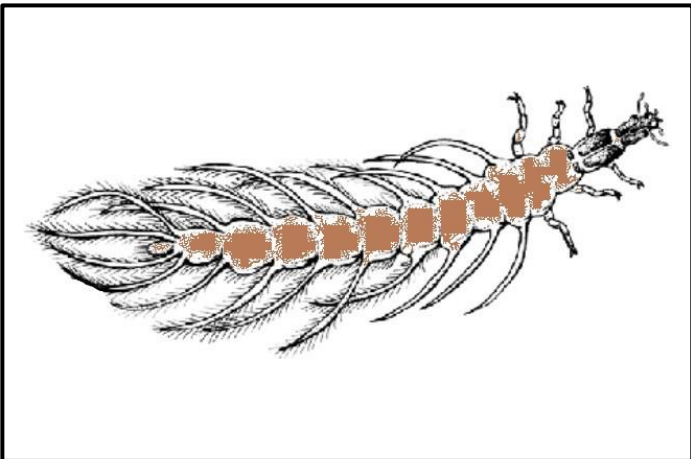


I am a WATER STRIDER

I am usually found in the **Surface Zone** and I am **tolerant** to poor water quality.

I am a **carnivore**.

My long and slender middle and hind legs enable me to 'skate' on the water surface.

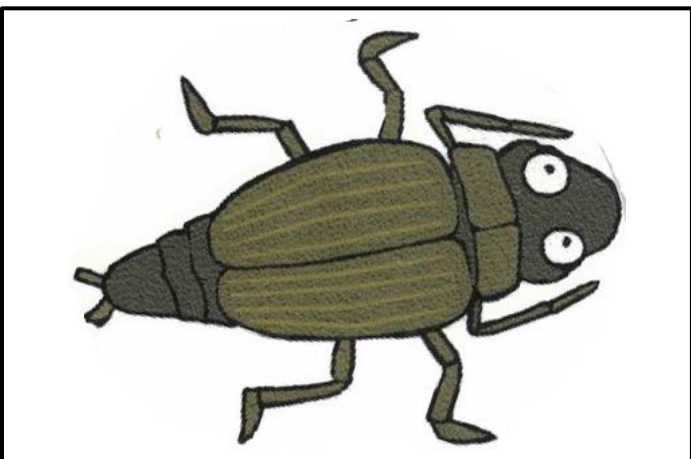


I am a WHIRLIGIG BEETLE LARVAE

I am usually found in the **Littoral Zone** and I am **tolerant** to poor water quality.

I am a **carnivore** and am covered in feathery projections.

I swim fast, sometimes swimming with my legs, sometimes undulating my abdomen.



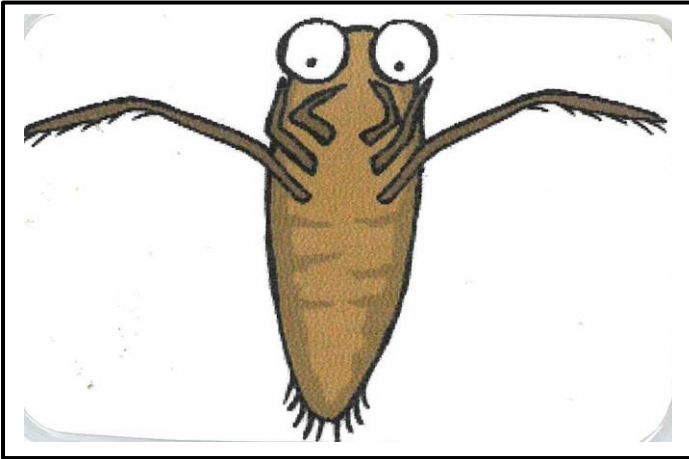
I am a WHIRLIGIG BEETLE

I am usually found in the **Surface Zone** and I am **tolerant** to poor water quality.

I am a **carnivore** and I like to eat dead insects, worms and insect larvae.

I whirl around on the surface of the water using my split eyes to see above and below the surface.

Very Tolerant Bugs

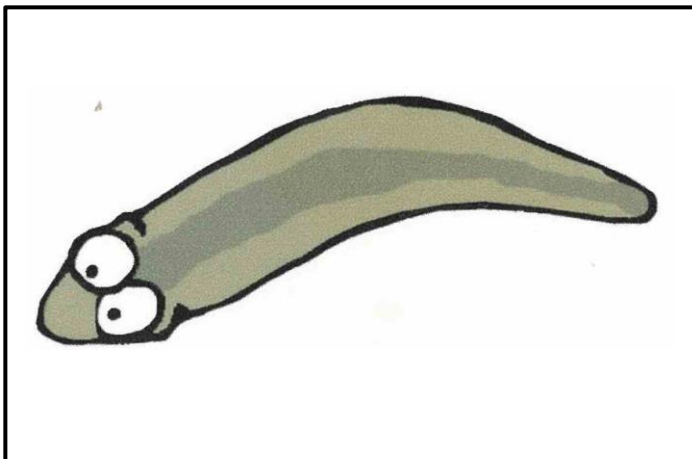


I am a BACKSWIMMER

I am usually found in the **Deep Zone** and I am **very tolerant** to poor water quality.

I am a **carnivore**. I like to suck the body juices of other insects, tadpoles and small fish !

I can even snatch bugs on the water surface, drag them under and eat them.

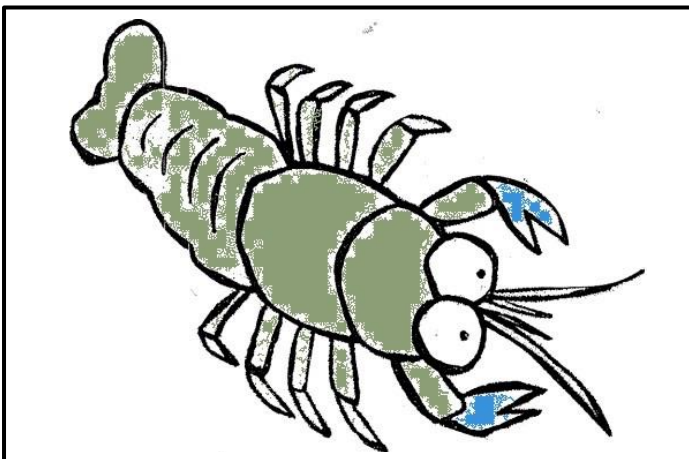


I am a FLATWORM

I live in the **Benthic Zone** and I am **very tolerant** to poor water quality.

I am a **detrivore** and like to eat decomposing plant matter.

I can glide upside down on the under side of the water surface.

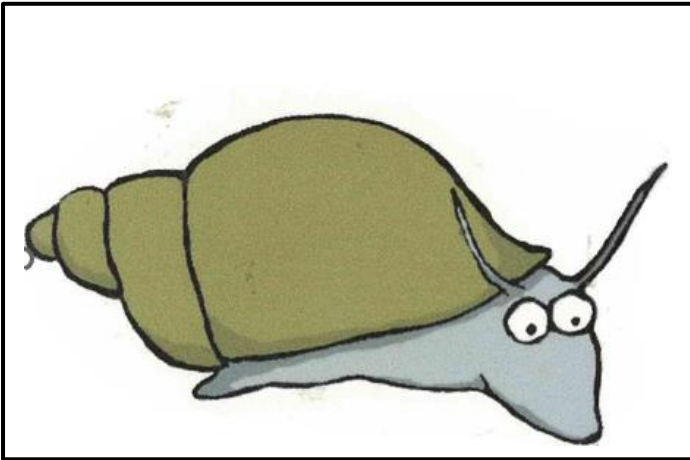


I am a YABBY

I live in the **Deep and Benthic Zones** and I am **very tolerant** to poor water quality.

I am a **detrivore** but will eat carrion too.

I can survive in drying waterways by burying deep into the moist mud and waiting for rain. I can also travel overland to other waterways.

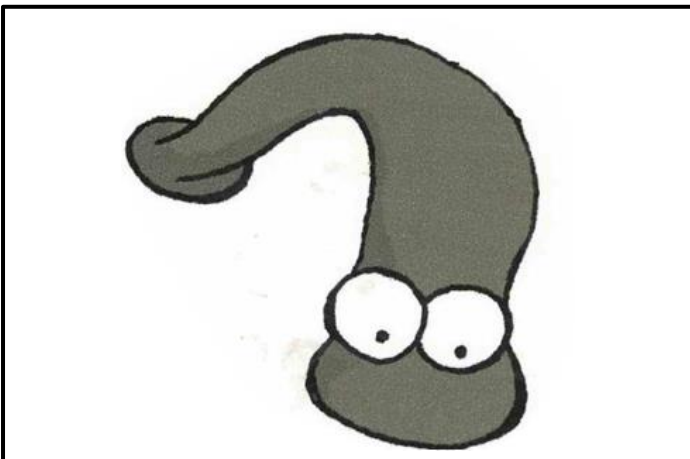


I am a **FRESHWATER SNAIL**

I live in the **Benthic Zone** in the sediment and sludge.

I am **very tolerant** to poor water quality.

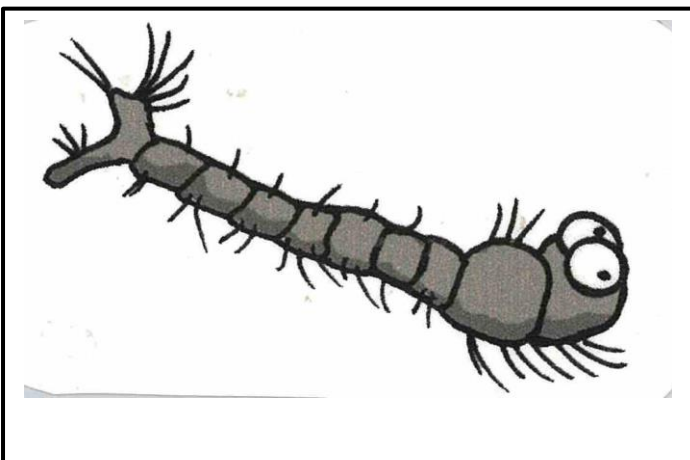
I am a **herbivore** and I scrape algae from the surface of rocks and plants.



I am a **LEECH**

I am usually found in the **Benthic Zone** and I am **very tolerant** to poor water quality.

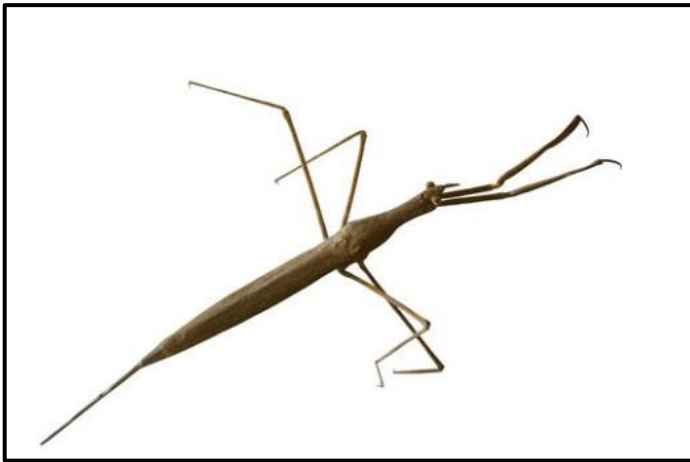
I am a **carnivore** and mainly feed on the blood and juices of snails and other large aquatic animals. I have suckers at each end of my body that help me to move and latch onto my prey.



I am a **MOSQUITO LARVAE**

I am usually found in the **Surface Zone** and I am **very tolerant** to poor water quality.

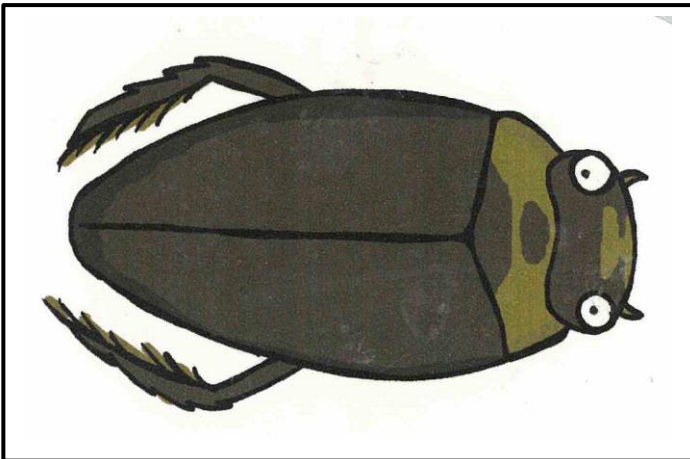
I am a **detritivore** but when I become a pupa I do not eat at all so I have to eat enough in my larval stage so I can make it through to adulthood.



I am a SLENDER WATER SCORPIAN

I am usually found in the **Surface Zone** in still, shallow, densely vegetated water bodies and I am **very tolerant** to poor water quality.

I am a **carnivore**. I am a 'sit and wait' predator and use my straw-like mouthparts to pierce my prey and suck fluids from it's body.

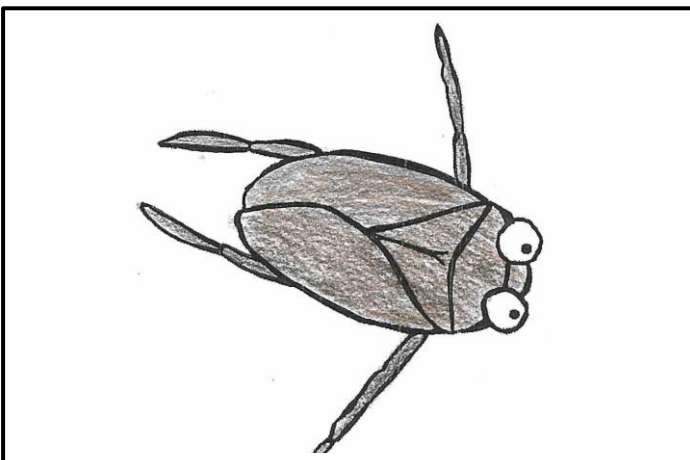


I am a DIVING BEETLE

I live in the **Surface Zone** and I am **very tolerant** to poor water quality.

I am a **carnivore** and I sometimes even attack small fish and tadpoles !

I can trap an air bubble under my wings so I can breathe underwater like a scuba diver.



I am a WATER BOATMAN

I live in the **Surface Zone**. I am common in all types of aquatic habitats and I am **very tolerant** to poor water quality.

I am an **omnivore** and eat algae and other small invertebrates.

I can fly from one water body to another.