

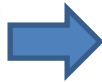
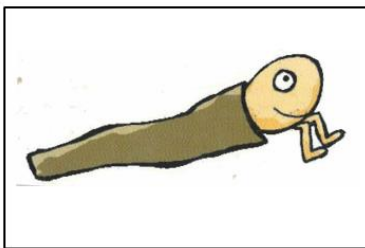
Each fact card includes:

- Image, name and habitat (see habitat terms below)
- Sensitivity level (**very sensitive**, **sensitive**, **tolerant** and **very tolerant**)
- Diet (carnivore, herbivore, omnivore, detrivore, parasite)
- Other interesting facts

Instructions:

Print and assemble cards with picture and information back to back (laminated will increase their longevity) and use with the [In Stream Habitat Poster](#), placing bugs in their preferred habitat zone when introducing waterbugs to students, or

- print the pictures and information separately and match to each other.



I am a **CADDISFLY LARVAE**

I am found in the **Reed Zone** and **Substrate Zone** amongst rocks, branches and plants. I am **very sensitive** to poor water quality.

I am an **omnivore**, scraping algae from rocks and hunting for small invertebrates

I build myself a protective case out of leaves, sand, reeds or sticks and drag it around.

- play celebrity head to 'guess the bug' with either the image, the name or the fact card displayed
- sort the bugs into groups; herbivores/carnivores, legs/no legs, habitat zones, sensitive/tolerant. How else could you classify them ?
- print two sets (pictures only) and use for games of Concentration, Snap or Fish

Glossary of Zones:

Surface Zone: the top of the water column in a waterway

Deep Zone: Amid the water column of a waterway

Reed Zone: Among the aquatic vegetation and reeds of a waterway

Littoral Zone: Along the edge of a waterway

Substrate Zone: the gravel, rock, sand area at the bottom of a waterway

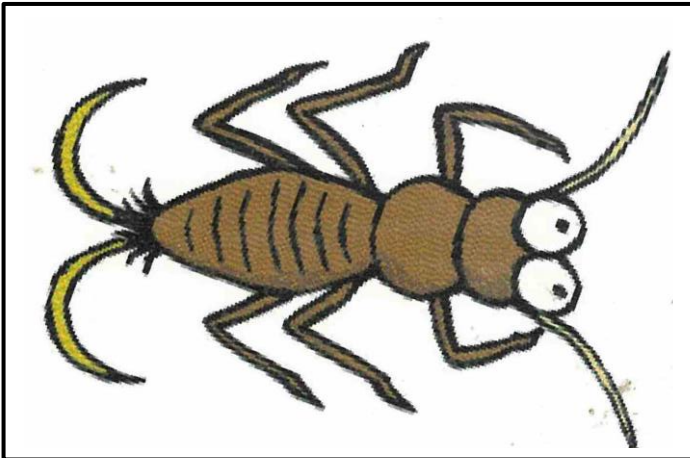
Benthic Zone: the sediment and mud at the very base of a waterway

These fact cards match the bugs and sensitivity levels found:

- on the [Waterbug ID chart](#) used in Macroinvertebrate Sampling sessions
- on the [Waterbug Flip Chart](#) and [Data Portal](#) found on the River Detectives website
- and on the [Waterbug Fact Sheets](#)

For more detail about these waterbugs refer to the [Now and Then booklet](#) or the [Agreed Level Taxonomy \(ALT\)](#) booklet found on the River Detectives website.

Very Sensitive Bugs

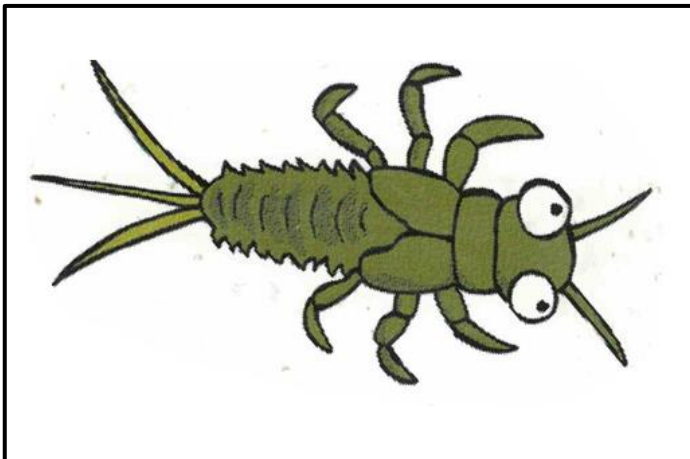


I am a **STONEFLY NYMPH**

I live in the **Substrate Zone** on stones in the fast flowing sections of creeks or amongst reeds in slow moving water. I am **very sensitive** to poor water quality.

I can be a **detrivore** or **omnivore**.

I can delay my development in drought conditions to wait for rain.

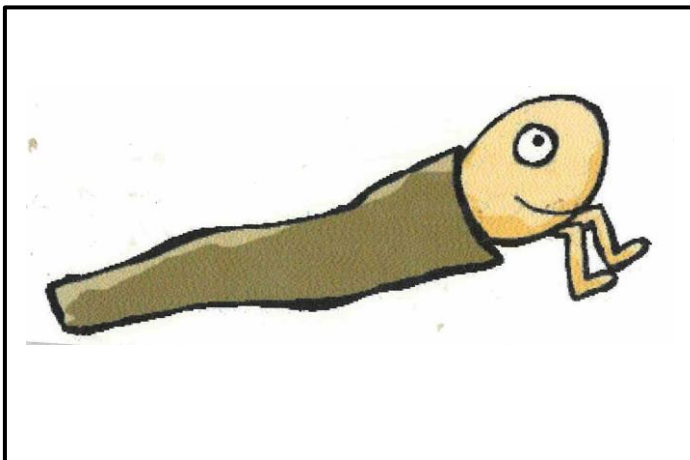


I am a **MAYFLY NYMPH**

I live in the **Substrate Zone** and I am **very sensitive** to poor water quality.

I can be a **detrivore** or **omnivore** eating algae, decaying organic matter and invertebrates.

I have gills on the sides of my abdomen that I flutter and I may only live for a few days or hours.



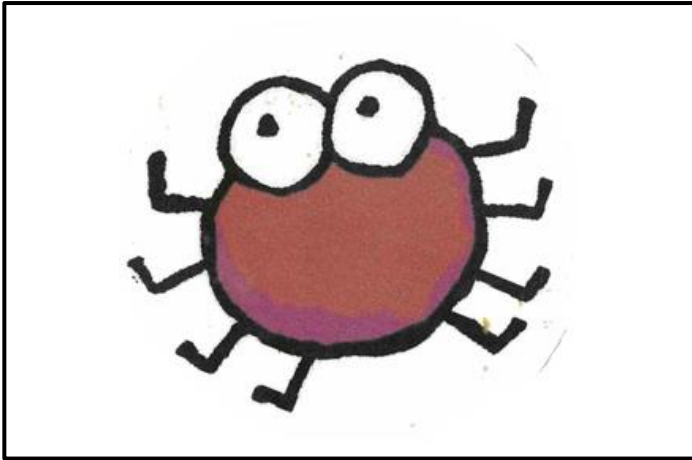
I am a **CADDISFLY LARVAE**

I am found in the **Reed Zone** and **Substrate Zone** amongst rocks, branches and plants. I am **very sensitive** to poor water quality.

I can be a **detrivore** or **omnivore** eating plant material, fine organic matter and invertebrates.

I build myself a protective case out of leaves, sand, reeds or sticks and drag it around.

Sensitive Bugs



I am a WATERMITE

I am usually found in the **Reed Zone** amongst plants in sheltered waterways. I am **sensitive** to poor water quality.

I am a **parasite**, sucking juices from small aquatic organisms.

You might be able to see the blood I've sucked by my red colour.

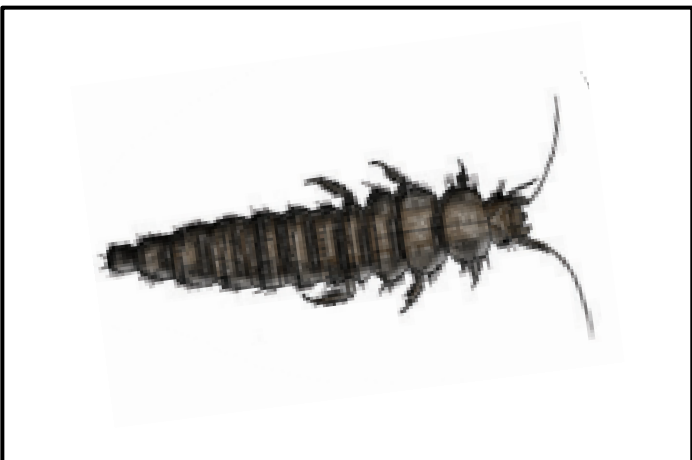


I am a BLACK FLY LARVAE

I cling onto logs, rocks and aquatic plants. I am **sensitive** to poor water quality.

I am a **detrivore** and **carnivore**, feeding on decaying organic matter and insect larvae.

I look like a 'chicken drumstick'. To move around I vomit up gluey silk then I use the hooks on my bottom to cling onto the silk.



I am a MARSH BEETLE LARVAE

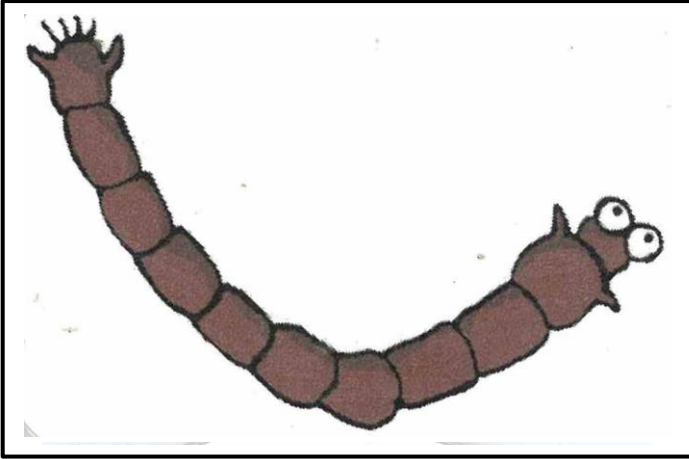
I am found in the **Littoral Zone** in flowing water.

I am **sensitive** to poor water quality.

I can be a **detrivore** or **omnivore** eating small organisms, algae and decaying organic matter.

I eat by filtering food from the surface of leaves and stones using complex comb-like mouthparts.

Tolerant Bugs

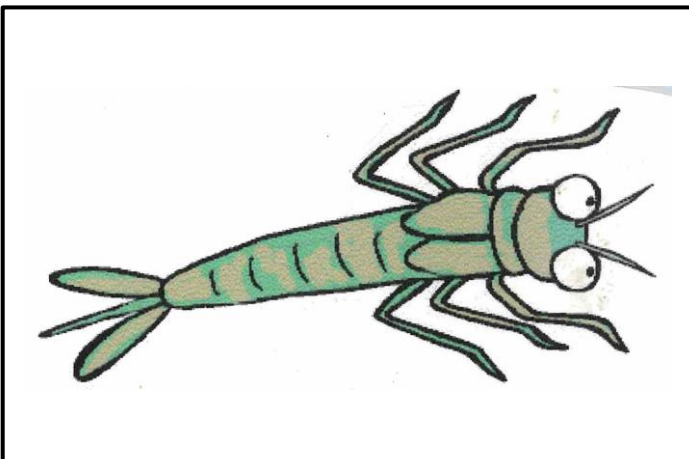


I am a **BLOOD WORM**

I live in the **Benthic Zone** and am **tolerant** to poor water quality.

I can be a **herbivore**, **detrivore** and **parasite**, feeding on algae, bacteria and organism juices.

I am often found in places with little oxygen available, such as among rotting leaves.



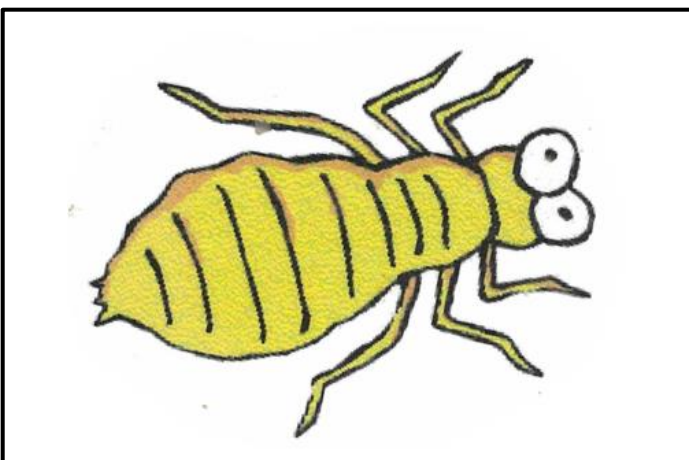
I am a **DAMSEFLY LARVAE**

I live in the **Reed Zone**, clinging to reeds or snags.

I am **tolerant** to poor water quality.

I am a **carnivore** emerging from eggs that were inserted into water plants.

The three tail feathers at the end of my body are actually gills that help me to breathe.

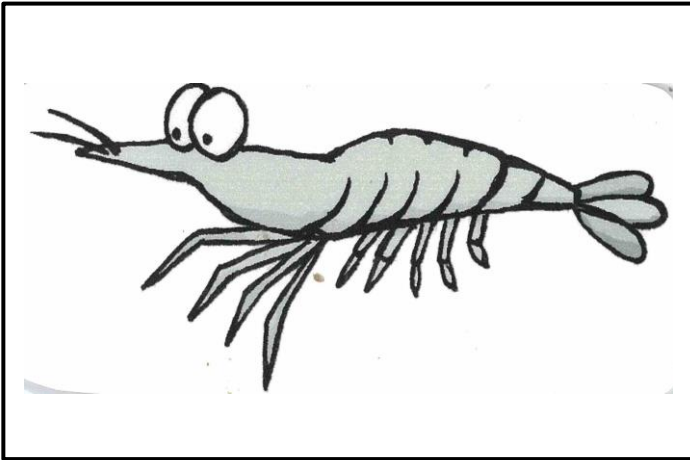


I am a **DRAGONFLY LARVAE**

I live in the **Reed Zone**, clinging to emergent plants. I am **tolerant** to poor water quality.

I am a **carnivore** and catch small creatures with my extending mouthparts.

I have gills on the inside of my body so I pump water in and out of my bottom to breathe.

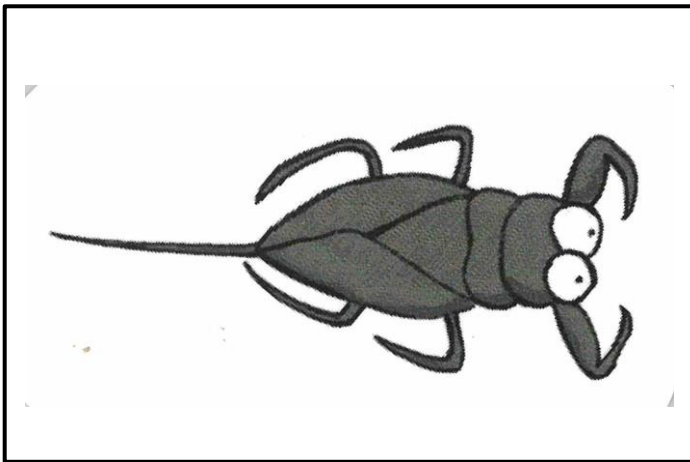


I am a **GLASS SHRIMP**

I live in the **Benthic Zone**, often close to the bank on rocks or among aquatic plants. I am **tolerant** to poor water quality.

I am a **detrivore** eating rotting plant matter.

I eat by using the first two pairs of legs to grab food and put it in my mouth.

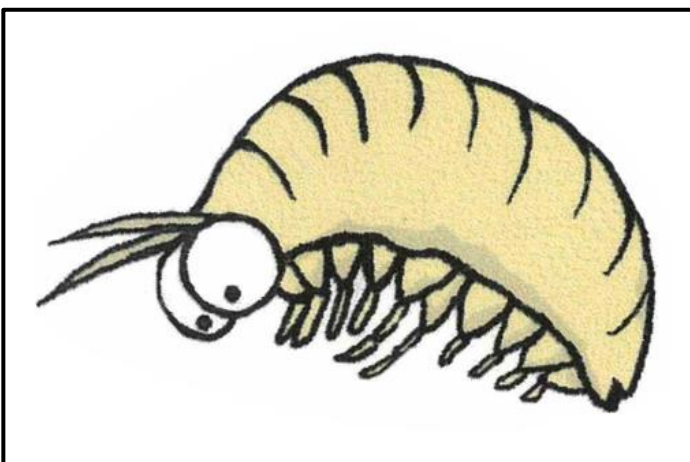


I am a **LEAFY WATER SCORPION**

I live in the **Reed Zone** and am **tolerant** to poor water quality.

I am a **carnivore**, feeding on decomposing matter.

My tail is a breathing tube that I use like a snorkel and I have excellent eyesight.

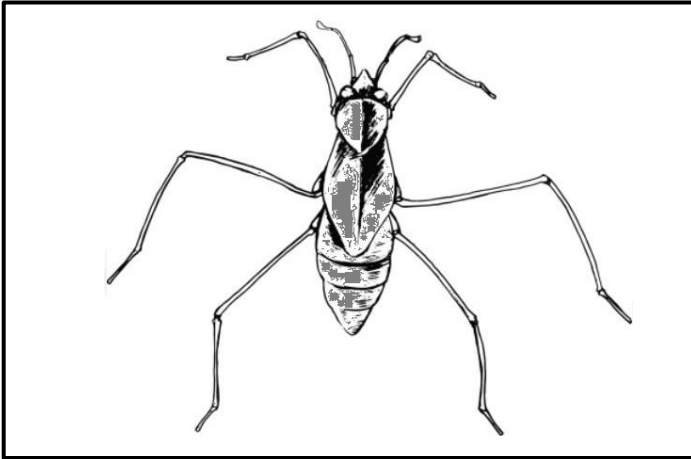


I am a **SIDE SWIMMER (or SCUD)**

I live in the **Reed Zone** in still or slow flowing water and am **tolerant** to poor water quality.

I am an **omnivore**, feeding on any algae or dead animals that will fit in my mouth !

Amphipods are related to crabs and can be green, red, grey or brown coloured.

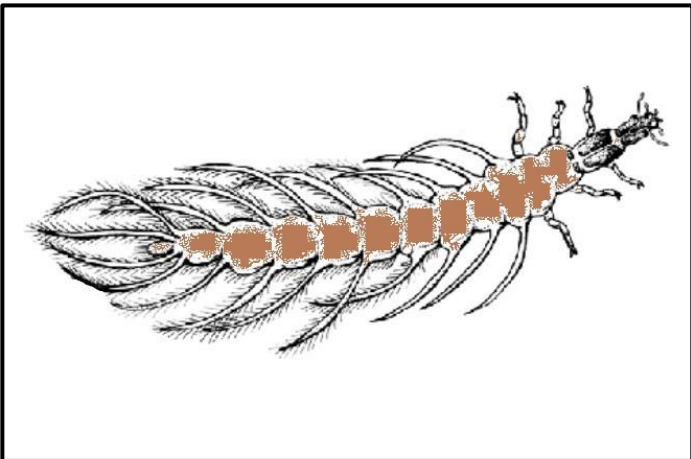


I am a **WATER STRIDER**

I am usually found in the **Surface Zone** and I am **tolerant** to poor water quality.

I am a **carnivore**.

My long and slender middle and hind legs enable me to 'skate' on the water surface.

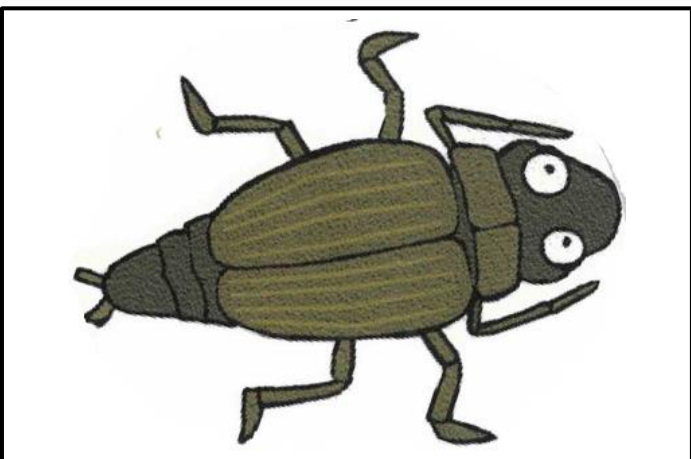


I am a **WHIRLIGIG BEETLE LARVAE**

I am usually found in the **Littoral Zone** and I am **tolerant** to poor water quality.

I am a **carnivore** and am covered in feathery projections.

I swim fast, sometimes swimming with my legs, sometimes undulating my abdomen.

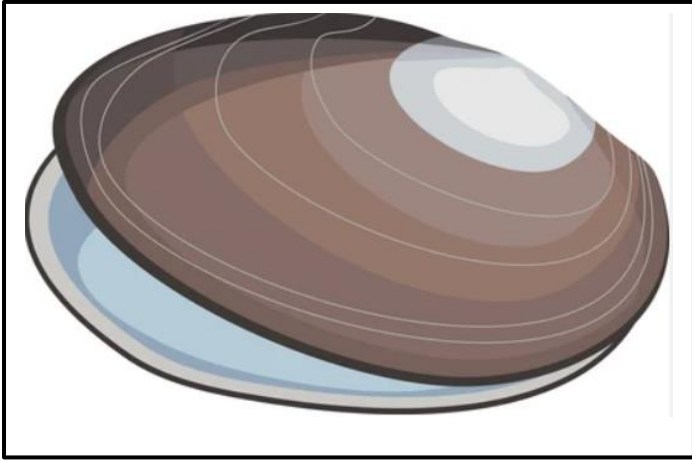


I am a **WHIRLIGIG BEETLE**

I am usually found in the **Surface Zone** and I am **tolerant** to poor water quality.

I am a **carnivore** and I like to eat dead insects, worms and insect larvae.

I whirl around on the surface of the water using my split eyes to see above and below the surface.



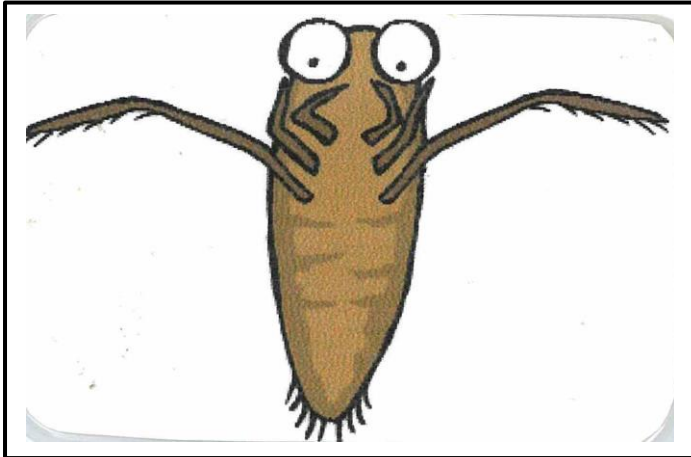
I am a FRESHWATER MUSSEL

I am usually found in the **Substrate Zone** and I am **tolerant** to poor water quality.

I am a **detrivore**, eating decaying organic matter and bacteria trapped by my gills.

I don't move but are found in large groups dug into the sediment of still / slow moving waters.

Very Tolerant Bugs

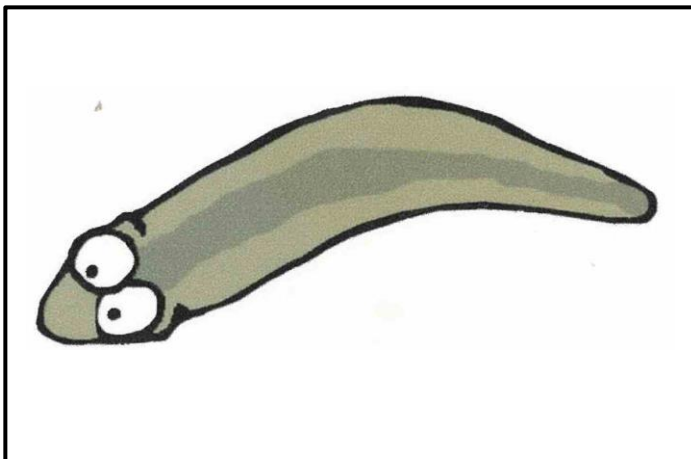


I am a BACKSWIMMER

I am usually found in the *Deep Zone* and I am **very tolerant** to poor water quality.

I am a **carnivore**. I like to suck the body juices of other insects, tadpoles and small fish !

I can even snatch bugs on the water surface, drag them under and eat them.

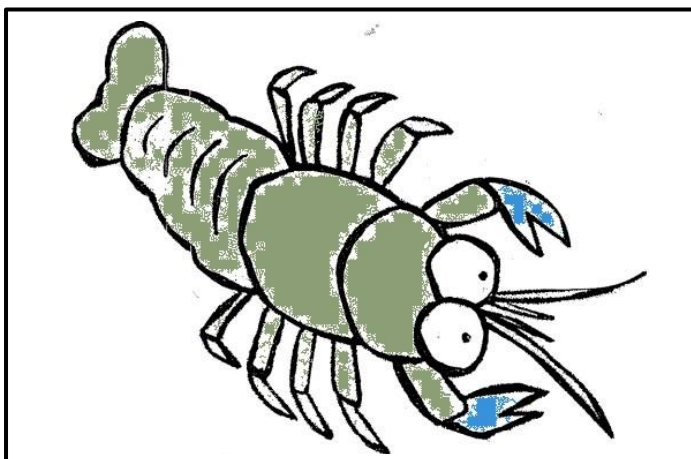


I am a FLATWORM

I live in the *Benthic Zone* and I am **very tolerant** to poor water quality.

I am a **detrivore** and **carnivore**, feeding on decomposing plant / animal matter and worms.

I can glide upside down on the under side of the water surface.

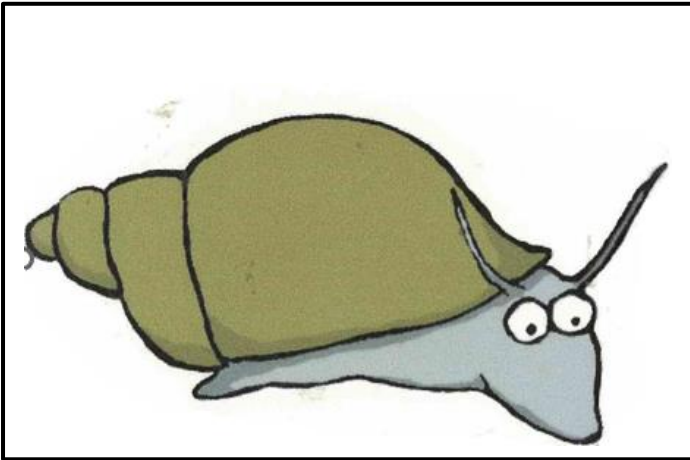


I am a YABBY

I live in the *Deep and Benthic Zones* and I am **very tolerant** to poor water quality.

I am a **detrivore** but will eat carrion too.

I can survive in drying waterways by burying deep into the moist mud and waiting for rain. I can also travel overland to other waterways.

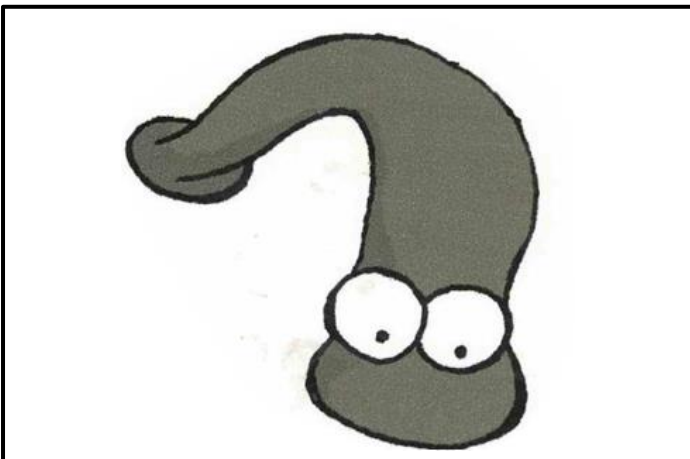


I am a FRESHWATER SNAIL

I live in the **Benthic Zone** in the sediment and sludge.

I am **very tolerant** to poor water quality.

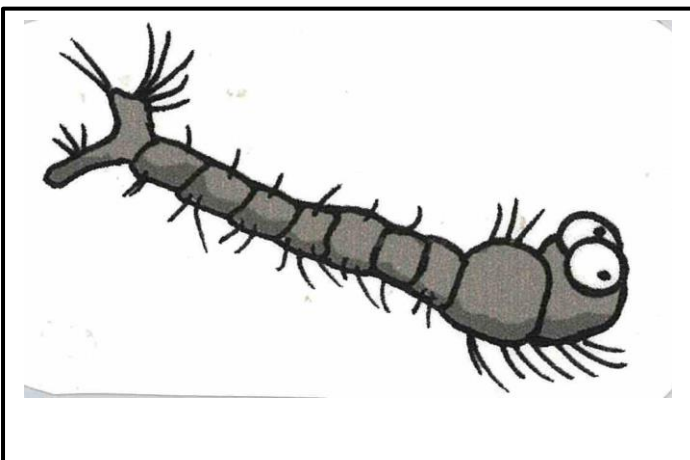
I am a **herbivore**. I eat leaves and I scrape algae from the surface of rocks and plants.



I am a LEECH

I am usually found in the **Benthic Zone** and I am **very tolerant** to poor water quality.

I am a **parasite** and mainly feed on the blood and juices of snails and other large aquatic animals. I have suckers at each end of my body that help me to move and latch onto my prey.

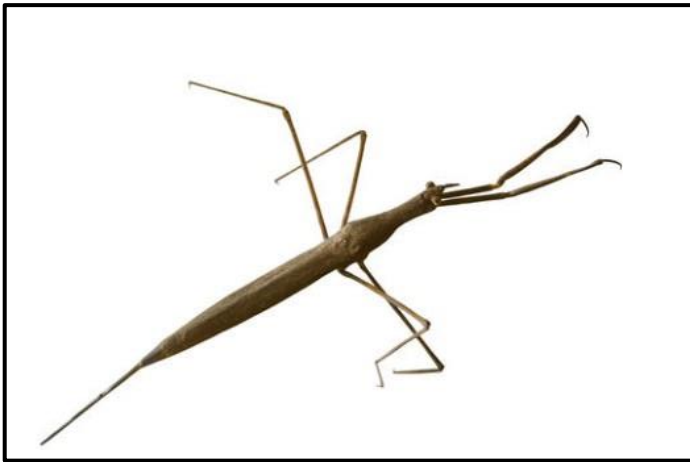


I am a MOSQUITO LARVAE

I am usually found in the **Surface Zone** and I am **very tolerant** to poor water quality.

I am an omnivore, filter feeding on smaller wrigglers, bacteria, fungi and algae.

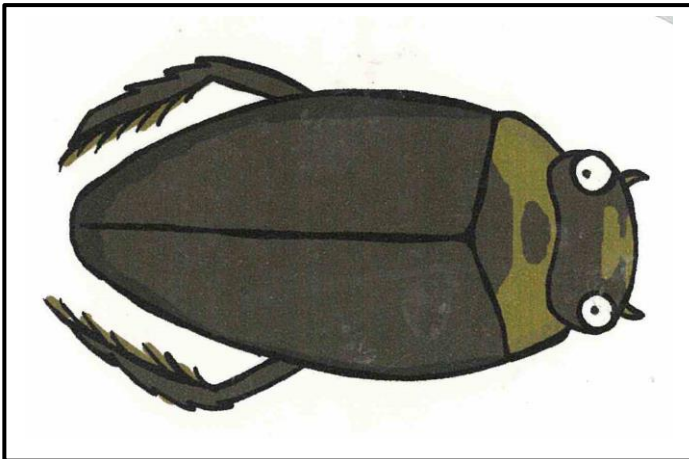
As a pupa I do not eat at all so I rely on the diet of my larval stage to make it through to adulthood.



I am a **SLENDER WATER SCORPIAN**

I am usually found in the **Surface Zone** in still, shallow, densely vegetated water bodies and I am **very tolerant** to poor water quality.

I am a **carnivore**. I am a 'sit and wait' predator and use my straw-like mouthparts to pierce my prey and suck fluids from it's body.

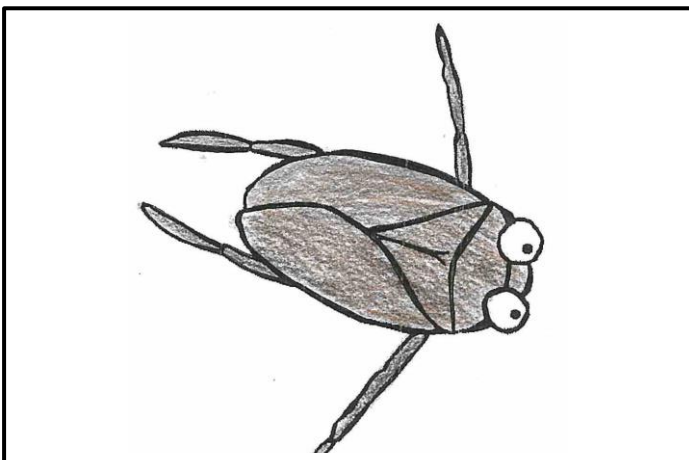


I am a **DIVING BEETLE**

I live in the **Surface Zone** and I am **very tolerant** to poor water quality.

I am a **carnivore** and I sometimes even attack small fish and tadpoles !

I can trap an air bubble under my wings so I can breathe underwater like a scuba diver.



I am a **WATER BOATMAN**

I live in the **Surface Zone**. I am common in all types of aquatic habitats and I am **very tolerant** to poor water quality.

I am a **carnivore** and **detrivore**, catching insect larvae and collecting decaying organic matter.

I can fly from one water body to another.