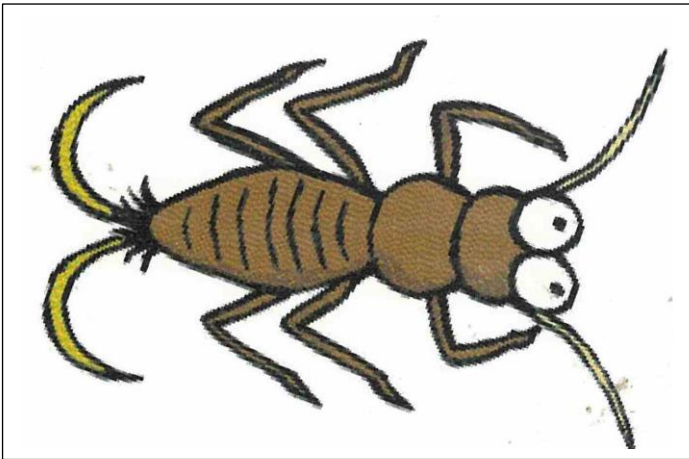


These pictures and descriptions can be copied in colour, placed back to back then laminated for use with the In-Stream Habitat Poster to introduce macroinvertebrates. Or you might like to keep the picture and the description separate and play SNAP!

Very Sensitive Bugs

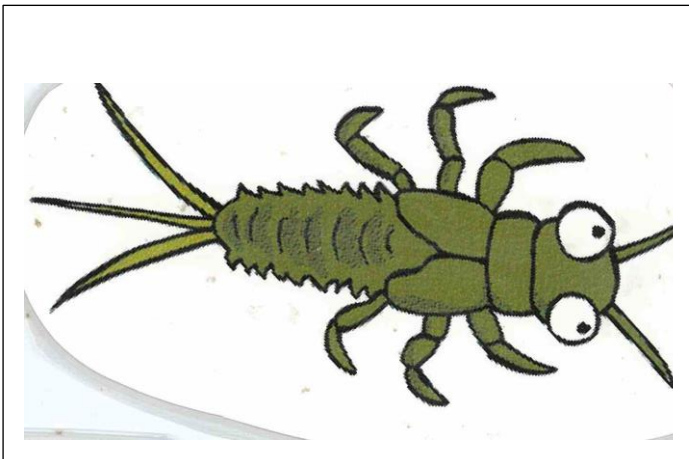


I am a **STONEFLY NYMPH**

I live in the **Substrate Zone** on stones in the fast flowing sections of creeks or amongst reeds in slow moving water. I am **very sensitive** to poor water quality.

I am a **herbivore** and eat decaying plant material.

I can delay my development in drought conditions to wait for rain.

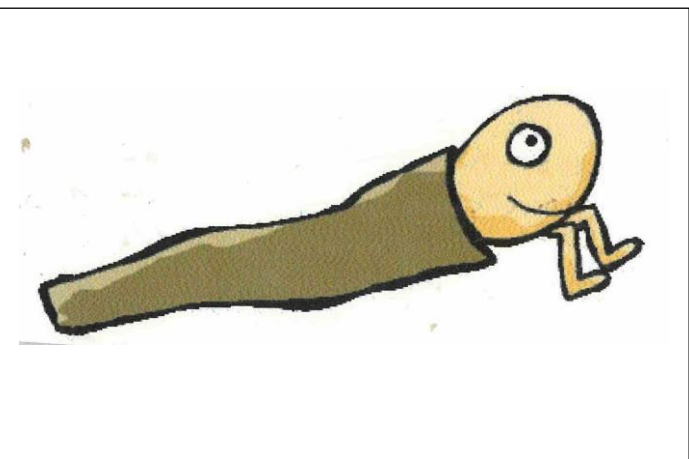


I am a **MAYFLY NYMPH**

I live in the **Substrate Zone** and I am **very sensitive** to poor water quality.

I am a **herbivore** and I like to graze on dead plants and leaves.

I may only live for a few days or even hours !



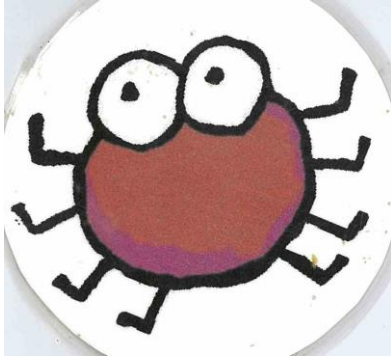
I am a **CADDISFLY LARVAE**

I am found in the **Reed Zone** and **Substrate Zone** amongst rocks, branches and plants. I am **very sensitive** to poor water quality.

I am an **omnivore**, scraping algae from rocks and hunting for small invertebrates

I build myself a protective case out of leaves, sand, reeds or sticks and drag it around.

Sensitive Bugs

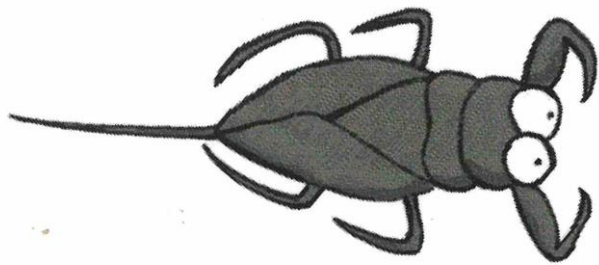


I am a WATERMITE

I am usually found in the **Reed Zone** amongst plants in sheltered waterways. I am **sensitive** to poor water quality.

I am a **carnivore** and feed on small animals by sucking their juices.

You might be able to see the blood I've sucked by my red colour.

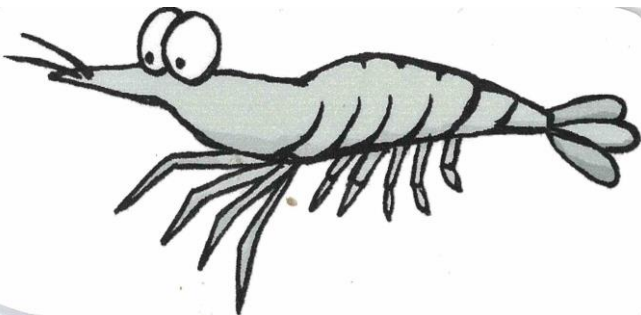


I am a WATER SCORPION

I live in the **Reed Zone** and am **sensitive** to poor water quality.

I am a **carnivore**.

I have a breathing tube which I use like a snorkel and I have excellent eyesight.

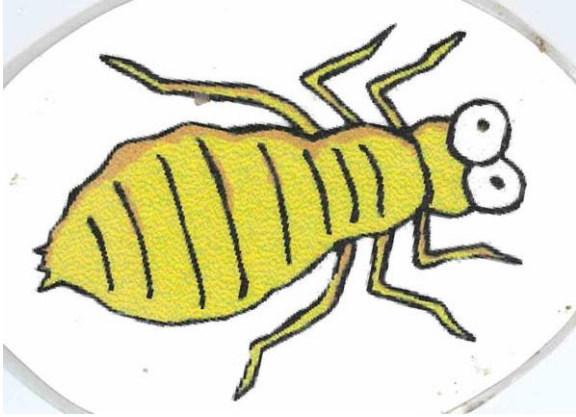


I am a FRESHWATER SHRIMP

I live in the **Benthic Zone**, often close to the bank on rocks or among aquatic plants. I am **sensitive** to poor water quality.

I am a **detrivore** eating rotting plant matter.

I eat by using the first two pairs of legs to grab food and put it in my mouth.

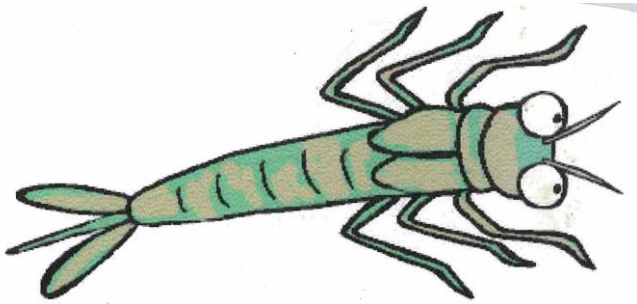


I am a **DRAGONFLY NYMPH**

I live in the **Reed Zone**, clinging to emergent plants. I am **sensitive** to poor water quality.

I am a **carnivore** and catch small creatures with my extending mouthparts.

I have gills on the inside of my body so I pump water in and out of my bottom to breathe.



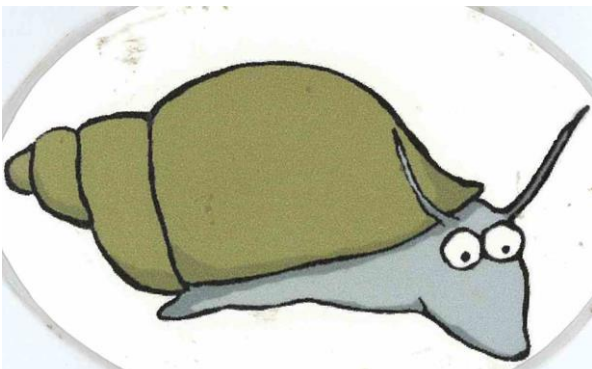
I am a **DAMSELFLY NYMPH**

I live in the **Reed Zone**, clinging to reeds, vegetation or snags. I am **sensitive** to poor water quality.

I am a **carnivore**.

The three tail feathers at the end of my body are actually gills that help me to breathe.

Tolerant Bugs

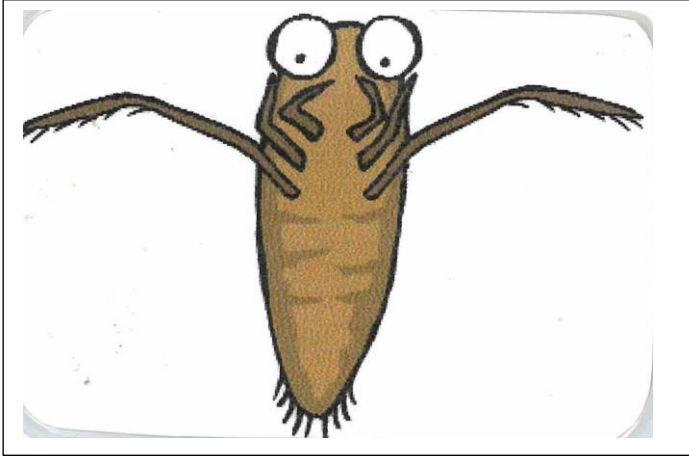


I am a **FRESHWATER SNAIL**

I live in the **Benthic Zone** in the sediment and sludge.

I am **tolerant** to poor water quality.

I am a **herbivore** and I scrape algae from the surface of rocks and plants.

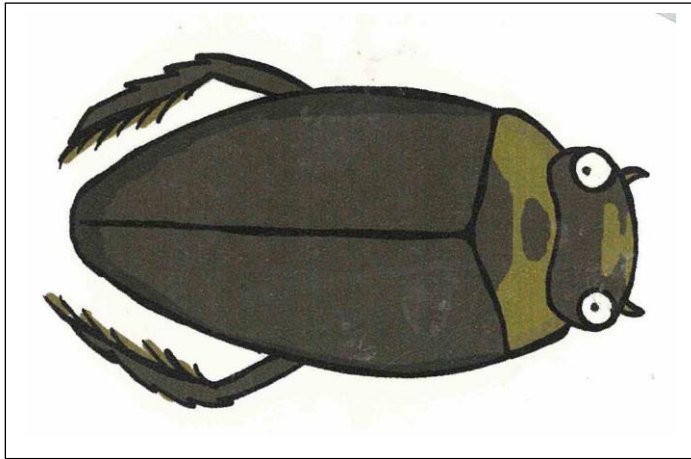


I am a BACKSWIMMER

I am usually found in the **Deep Zone** and I am **tolerant** to poor water quality.

I am a **carnivore**. I like to suck the body juices of other insects, tadpoles and small fish !

I can even snatch bugs on the water surface, drag them under and eat them.

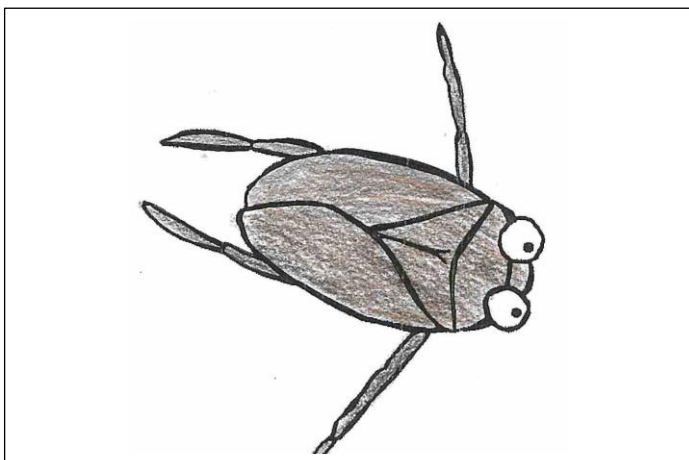


I am a DIVING BEETLE

I live in the **Surface Zone** and I am **tolerant** to poor water quality.

I am a **carnivore** and I sometimes even attack small fish and tadpoles !

I can trap an air bubble under my wings so I can breathe underwater like a scuba diver.

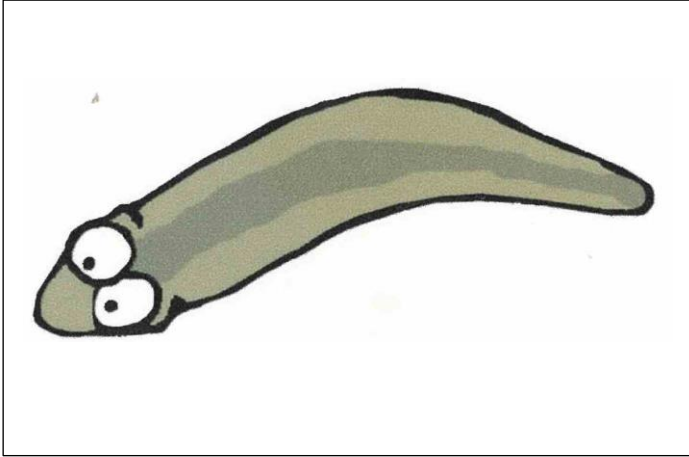


I am a WATER BOATMAN

I live in the **Surface Zone**. I am common in all types of aquatic habitats and I am **tolerant** to poor water quality.

I am an **omnivore** and eat algae and other small invertebrates.

I can fly from one water body to another.

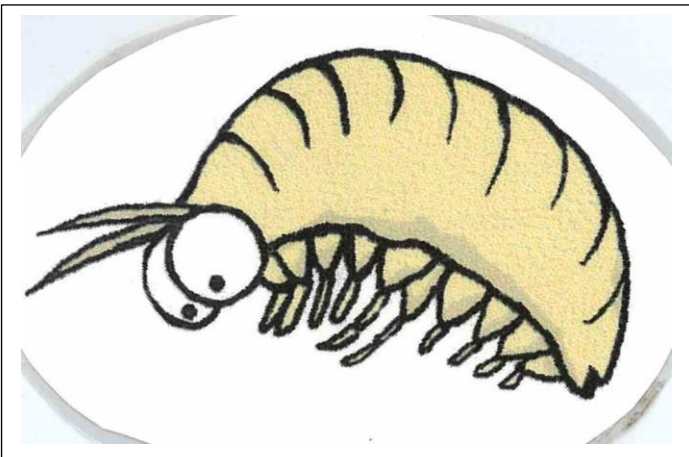


I am a **FLATWORM**

I live in the **Benthic Zone** and I am **tolerant** to poor water quality.

I am a **detrivore** and like to eat decomposing plant matter.

I can glide upside down on the under side of the water surface.

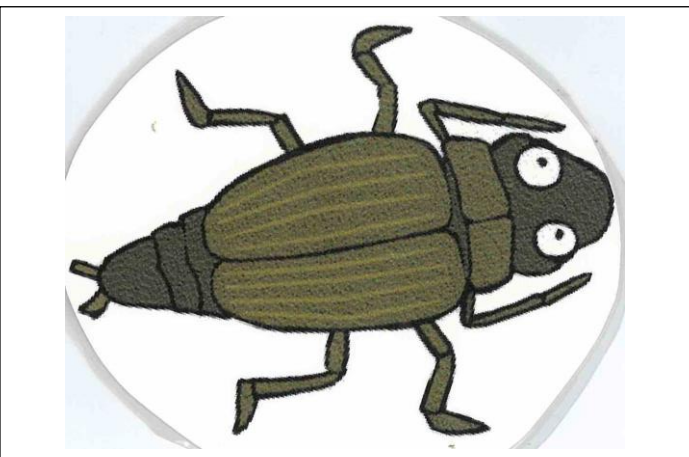


I am an **AMPHIPOD (SCUD or SIDE SWIMMER)**

I live in the **Reed Zone** in still or slow flowing water and am **tolerant** to poor water quality.

I am an **omnivore** and I eat most things that fit in my mouth !

The male will guard the female until she disperses her young.

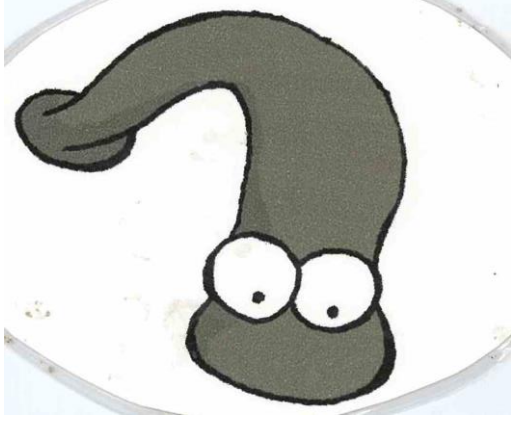


I am a **WHIRLIGIG BEETLE**

I am usually found in the **Deep Zone** and I am **tolerant** to poor water quality.

I am a **carnivore** and I like to eat dead insects, worms and insect larvae.

You might notice me whirling around on the surface of the water sometimes.

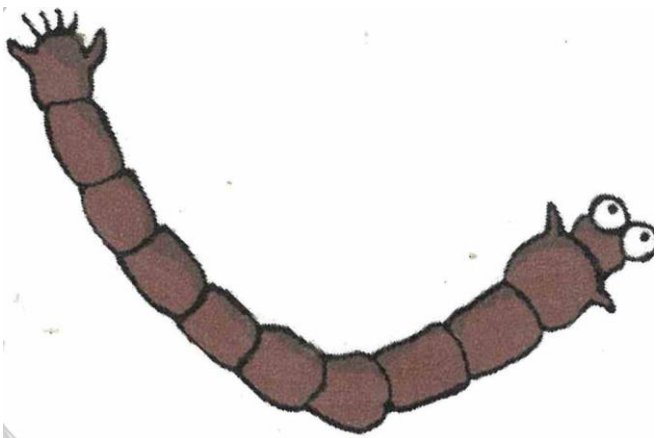


I am a LEECH

I am usually found in the **Benthic Zone** and I am **tolerant** to poor water quality.

I am a **carnivore** and mainly feed on the blood and juices of snails and other large aquatic animals. I have suckers at each end of my body that help me to move and latch onto my prey.

Very Tolerant Bugs

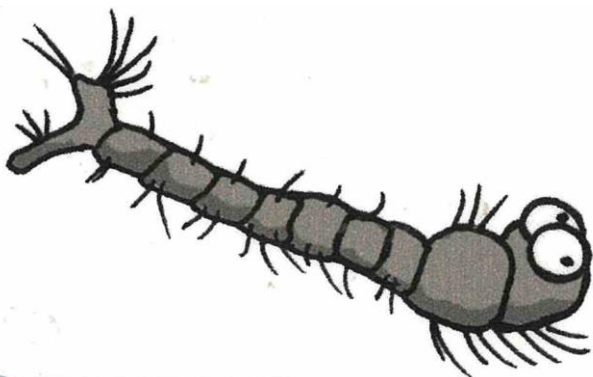


I am a BLOOD WORM

I live in the **Benthic Zone** and am **very tolerant** to poor water quality.

I am an **omnivore** and eat decaying plant and animal matter.

I am often found in places with little oxygen available, such as among rotting leaves.



I am a MOSQUITO LARVAE

I am usually found in the **Surface Zone** and I am **very tolerant** to poor water quality.

I am a **detritivore** but when I become a pupa I do not eat at all so I have to eat enough in my larval stage so I can make it through to adulthood.