

Macro-invertebrate Sweep

There are many small creatures living in the waterways throughout the catchment. Many of these creatures love living around water plants, in the mud and underneath rocks and stones on the riverbed. These water creatures are known as aquatic macro-invertebrates. Some are especially clever and can walk on the surface of the water.

Aquatic macro-invertebrates are a very important part of the waterways. Many of them live in the water for a long period of their life and are food for many larger animals such as fish, frogs and birds.

They are sensitive to the quality of the water; their survival depends on it. The presence and abundance of aquatic macro-invertebrates can tell us a lot about the quality of the water in your waterway.

When looking for aquatic macro-invertebrates the best place to look is in reeds and other water plants, in the mud and in the open water. They are very small so you have to keep your eyes open and look very closely for them.

Now that you know what you are looking for its time to visit your monitoring site and do an aquatic macro-invertebrate sweep. Make sure you take your record sheet with you so you can record exactly what you find.

Common name: Water mite
Scientific name: Phylum Arthropoda
 Class Arachnida
 Order Acariformes
 Family Arrenuridae
 Genus Arrenurus
 (can you remember all of that??)

Mites have a round body and eight legs.

Their mouth has two finger-like bits (palps) and a spike for piercing their prey.

This mite is up to 1.5mm in size, which is as big as this dot. •

It can be found Australia wide in lakes, pools, streams and rivers.

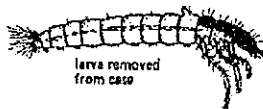


Aquatic Invertebrate Record Sheet

Very Sensitive Animals



Mayfly Nymph



Caddisfly Larvae

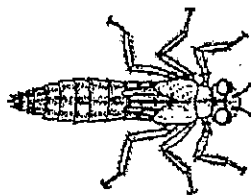


Stonefly Nymph

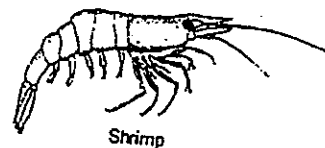
Sensitive Animals



Damselfly Nymph



Dragonfly Nymph



Freshwater Shrip



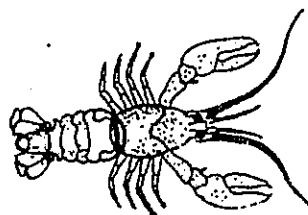
Freshwater Slater



Water Mite



Freshwater Mussel



Yabby

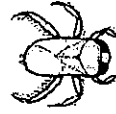




Backswimmer



Diving Beetle



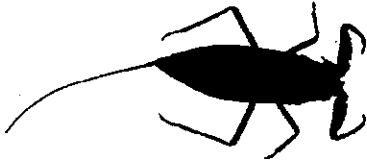
Water Boatman



Whirligig Beetle



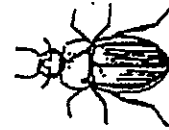
Water Strider



Water Scorpion



Leech



Water Scavenger Beetle



Scud or Side-swimmer



Flatworm

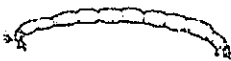


Freshwater Snail



Nematode

Very Tolerant Animals



Non-Biting Midge or Blood Worm



Fly Larvae



Aquatic Earthworm



Mosquito Larvae



Macro-invertebrate Class Results Sheet Sweep

Please fax your monthly results sheets to the 'Mighty Mites' at Corangamite Waterwatch. Fax: 52 269 136

SCHOOL: CLASS:

Date of Aquatic Macro-invertebrate Sweep:

Were there lots of little animals in your sample?

YES

NO

How many different types of aquatic macro-invertebrates did you find?

.....

Name the aquatic macro-invertebrates you found most of:

.....
.....
.....
.....

In which category did most of the macro-invertebrates you found fall?

.....

If lots of different types of macro-invertebrates indicate healthy water, is your water sample healthy?

.....
.....

Using macro-invertebrates as indicators how would you rate your water?

Excellent

Good

Okay

Not so good

MACRO-INVERTEBRATES

42.

